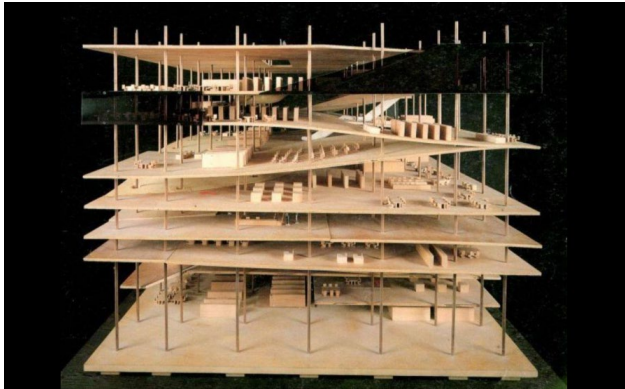


ARC 2014 Comprehensive Building Studio, Maria Denegri
Winter 2025 | **Interstitial Space**

The Interstitial

In the Comprehensive Building Studio, we strive to create projects that are driven by inventive and provocative compositional and spatial strategies; projects that are both inwardly coherent and urbanistically rich. Complex buildings are not oversized diagrams indicating prescribed routines and activities, but rather materially layered environments that are unpredictable, dynamic and that foster conversation and insight; that harbor the unexpected. We are striving to create projects that are capable of both subtle and profound change over time. The Interstitial- literally the space between- will be mobilized in the Denegri studio to harness the diversity and the complexity required of contemporary architecture.

Interstitial 1: Building the Site | Siting the Building

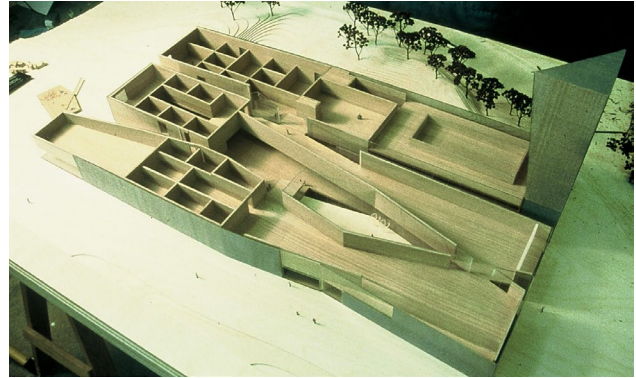


Jussieu Library, OMA

The urban environment of the North American city is at once highly ordered and very dynamic. The spatial infrastructure of streets, lanes and parks surround and engage buildings and their sites. Services from below-grade sewers and channels to above-grade lighting, conduit, signage and signals all persist and fluctuate over timeframes calibrated in years and in moments. We must embrace these elements in architectural design not as neutral or fixed realities, but as catalysts for massing and open space decisions that must define the position and the ambition of our built projects. Building massing/programming strategies and site planning strategies in the studio will be closely interrogated in the context of the living and changing urban environment. In OMA's unbuilt project for the Jussieu Library in Paris, the normally hermetic programs of book storage and access are exfoliated in a grand unfolding that literally connects the street to the stacks. The institution conceptually and literally fuses with the street. We will explore many strategies for building the site and siting the building that are inspired by this and other precedents.

Interstitial 2: Primary Spaces | Blurred Edges | Order and Variation

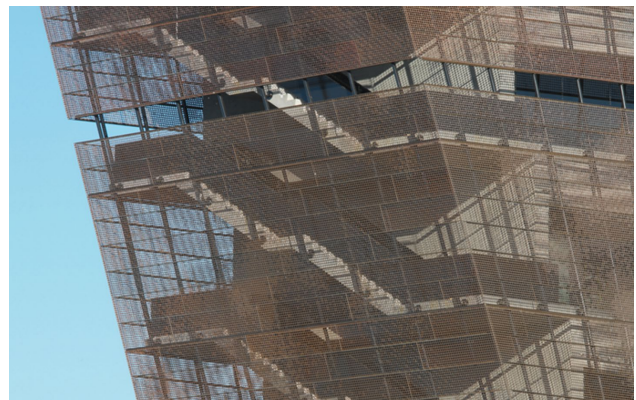
This studio will ask students to combine housing with a public program. Competing primary requirements of both programs and varied uses, both in time and space, will be interrogated and tested.



De Young Museum, Herzog & de Meuron

The overlapping conditions that this analysis produces can be understood as opportunities rather than anomalies. While 20th century high modern architecture required strict registration of program to space over an assumed grid, current technologies, building systems and spatial concepts accept more fluid strategies. Students will develop plans and massing diagrams that explore order and overlap in the pursuit of rich and varied spatial conditions in their projects.

Interstitial 3: Poche Space | Thickened Envelope | Interior and Exterior | Modulation



De Young Museum, Herzog & de Meuron

The modernist pursuit of a slender and ephemeral building skin has given way to more productive conversations and strategies for the building envelope driven by thermal performance without compromising access to light and air. The poche space – literally thickened space of the building envelope offers opportunities to solve important functional problems.

Through intensive development of detail models and cut-aways, Students will be tasked with developing dynamic and 'thick' building envelopes without compromising spatial flow and programmatic efficiency.

Through the strategies of **The Interstitial** outlined above, students will develop detailed building projects that are spatially rich and dynamic while also fulfilling the strong ambition of the Comprehensive Building Studio toward a sustainable architecture.